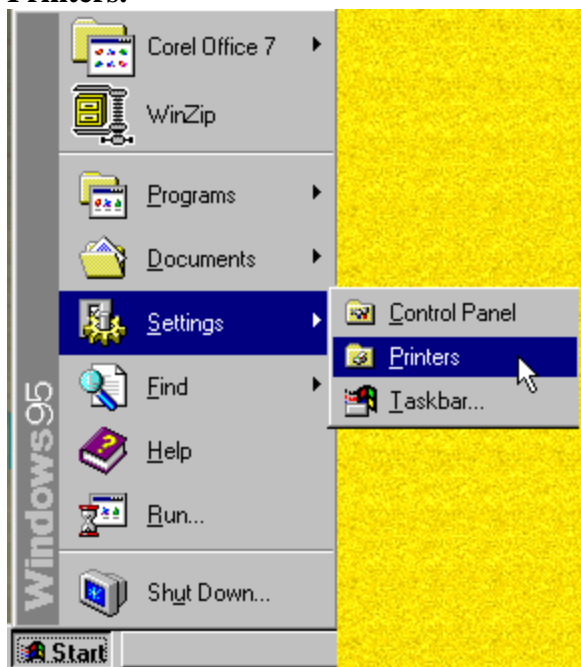


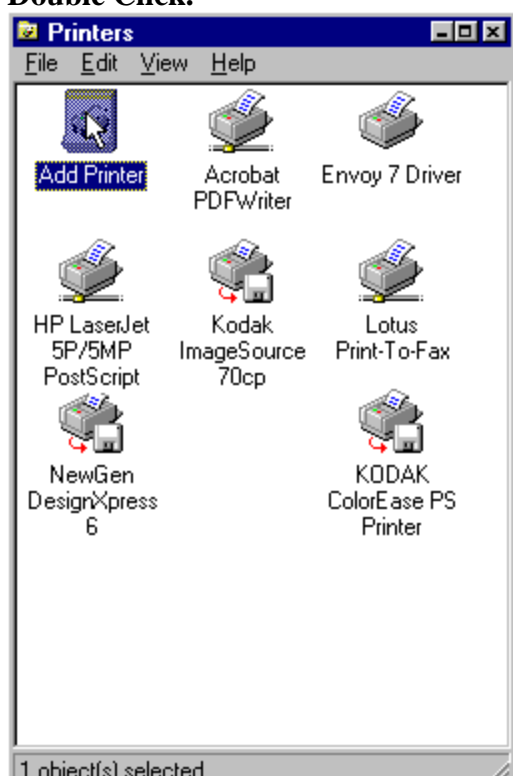
## Creating Postscript files in Windows95-98

**These directions will take you through the steps necessary to set up a postscript printer driver, to create postscript files.**

**1) Your first step is to click start on the Taskbar, move up to Settings, then select Printers.**



**2) The next step is to select the Add Printer icon. Double Click.**

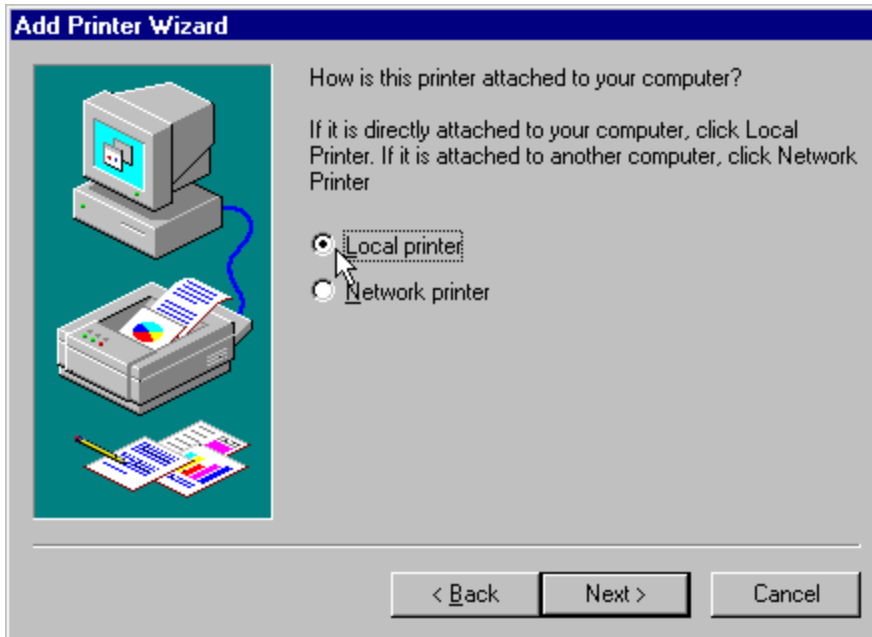


**3) At the Add Printer Wizard click Next.**



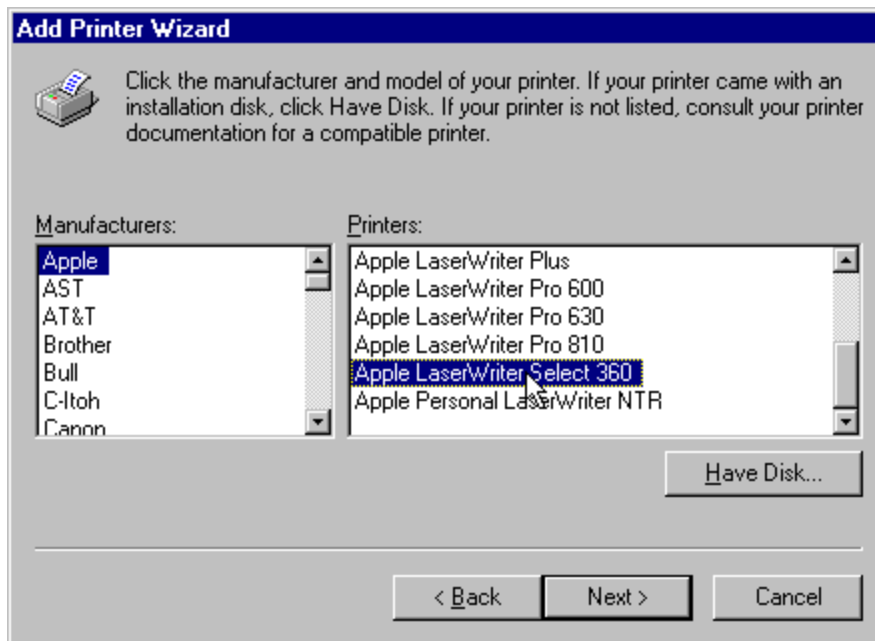
**4) At the next step select Local printer and click Next (we are just going to use the printer driver and the printer will not really exist on your hard drive or on a network).**

**Click Next.**

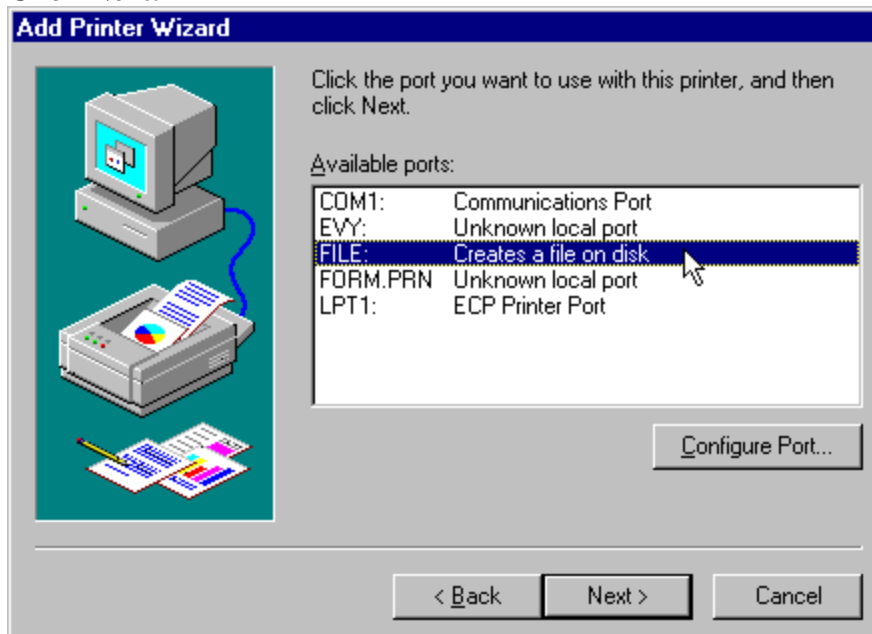


**5) Now you will select the printer that you would like Windows 95 to set up. Apple LaserWriters are a good choice for creating postscript files. We suggest that you select the Apple LaserWriter Select 360. Under Manufacturers select Apple, than under Printers select Apple LaserWriter Select 360.**

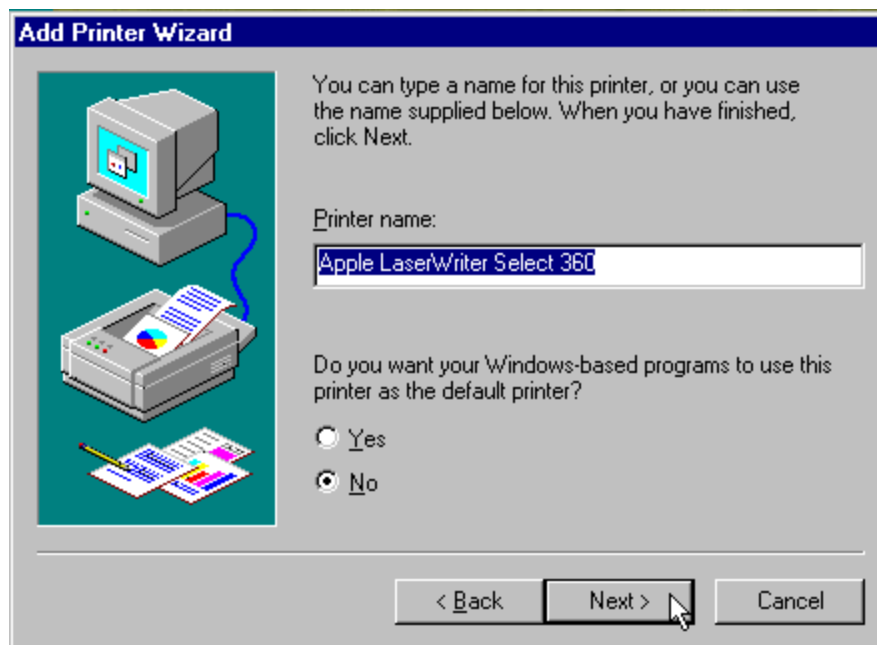
**Click Next.**



6) At the next window select "FILE: Creates a file on disk". Instead of your document going to a printer, it will print to a file on your hard drive. Click Next.



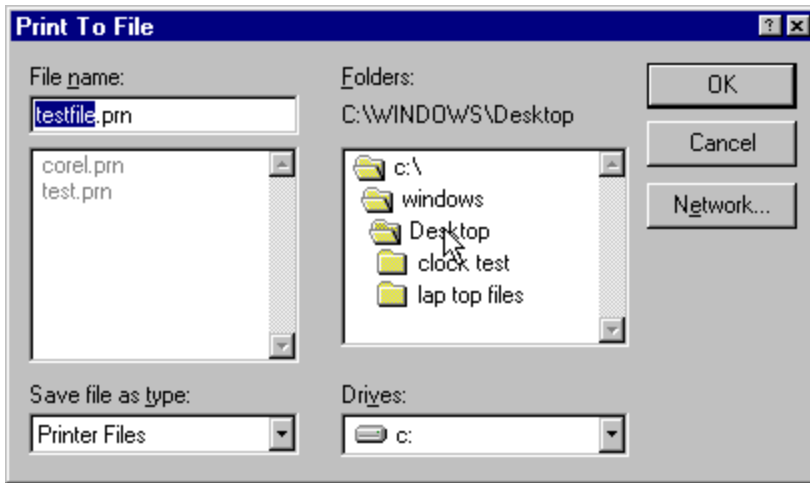
7) If you would like to change the name of this printer to remind you that it is only used to print files to your hard drive, you can do that here. You will probably want to say "No" to setting this as your default printer, unless you want to print to files most of the time. Click Next.



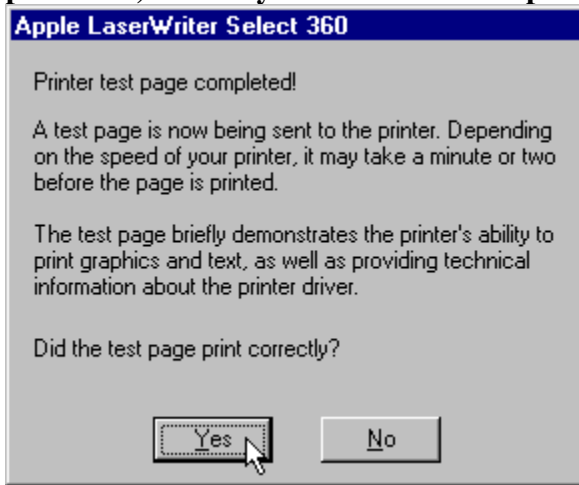
**8) Check Yes to have Windows 95 print you a test file.  
Click Finish.**



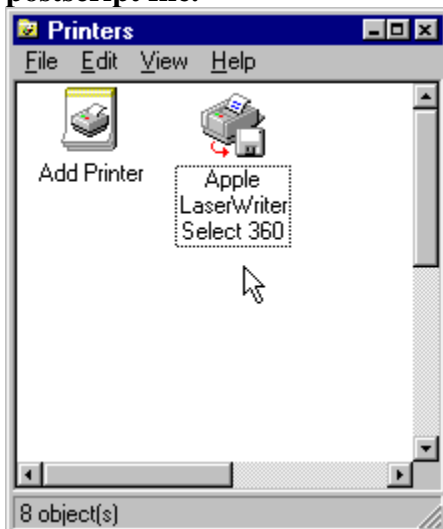
**9) After Windows processes your file, a window will pop up for you to indicate where to save your file. Name the file something appropriate and make sure you remember where you save it. Saving to the desktop is a convenient place to find your file (as in the sample window below). The file should have a three letter extension of ".prn" or two letters of ".ps", do not change this part of the file name.**



10) When asked if your test page printed correctly click on Yes. When it is all done you can E-mail us the file and we will process it through our RIP (raster image processor) and let you know if the file processed properly.



11) When you are done you should have a new printer icon in your Printers Window. This will be the printer you will select when you want to create a postscript file.

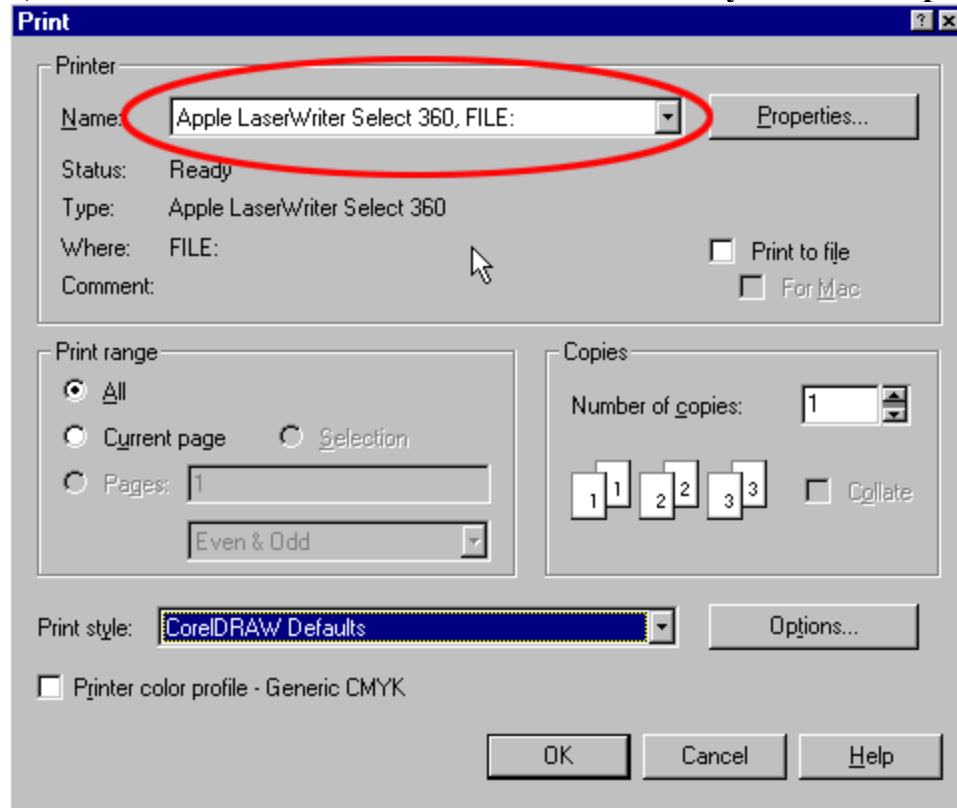


12) Your print dialogue window will appear differently from various applications. The samples below are from several different programs. These are the main options you need to look for.

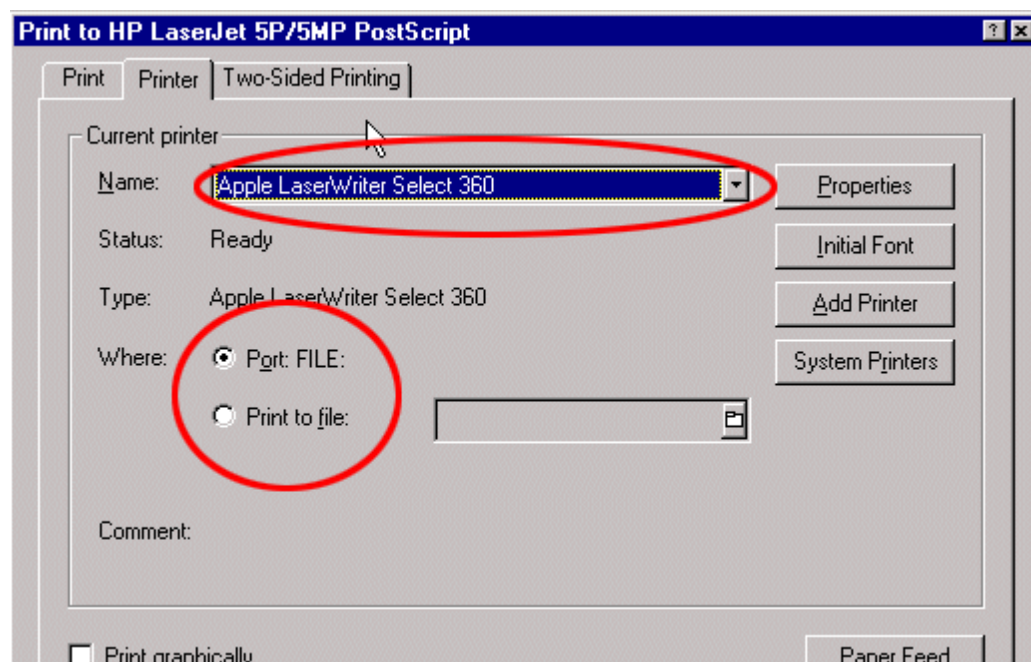
1) That you have selected the LaserWriter 360 print driver.

2) You **DO NOT** select print to file because your print driver is already set to do this for you.

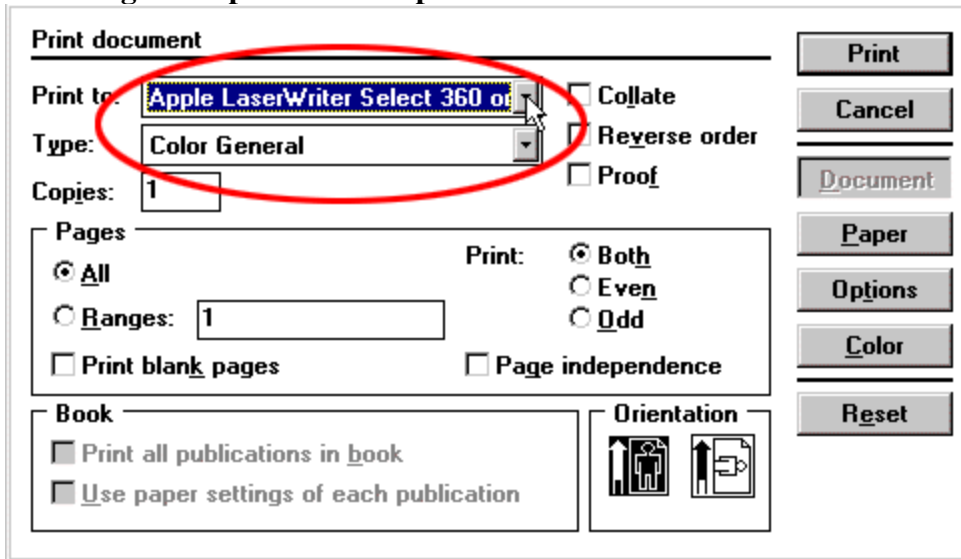
3) You should also select to include fonts where ever you have the option to.



**DO NOT** select print to file. You will notice that your port is already printing.



If you need to select a printer description that is not available, select color general or some generic printer description.



If you see an option to include fonts in the file, select it to include your fonts. You will notice in this window you have the option to "write postscript to file:". **DO NOT** select this, your print driver is already printing to file.

